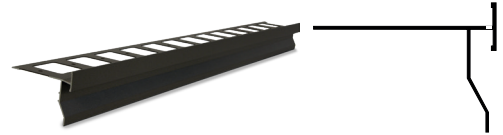


Aquaform D Plus

Painted aluminium drip edging to be used with Kerakoll Laminate systems for waterproofing the substrate thickness and the disposal of rainwater in external surfaces with railings.



Aquaform D Plus has a double edging with drainage holes.

12.5 mm tile cover trim and specific anchoring tab for under-tile fastening.

1. Total protection of the substrate thickness
2. Prevents water from percolating down the front sections and walls
3. Corrosion-proof material
4. Painted with 60 µm thick polyester powders
5. Pre-drilled tab for fixing
6. External and internal corner
7. Special parts: Aquaform DC external corner, Aquaform DC internal corner and Aquaform DL connecting piece

Areas of application

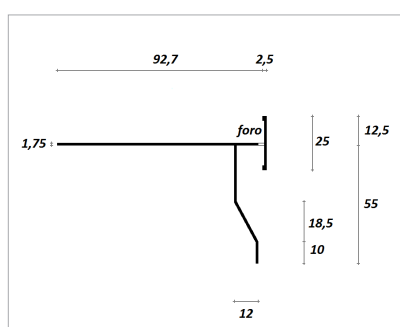
→ Intended use:

Balconies, flat roofs, terraces and external surfaces of any size.

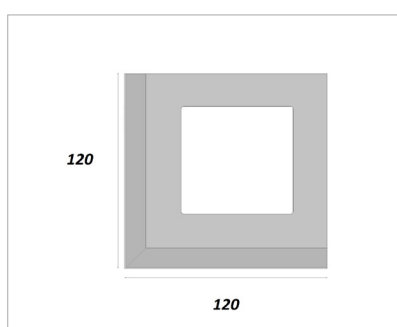
Creation of drip edging along the open edges of terraces, balconies and external surfaces in the Kerakoll's Laminati systems.

Instructions for use

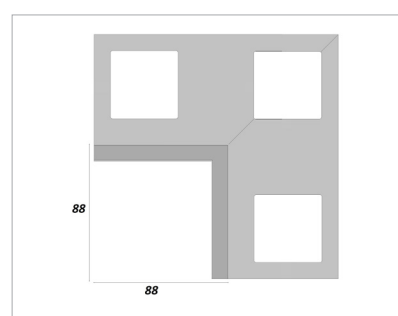
→ Technical diagrams



profile



external corner



internal corner

→ Application

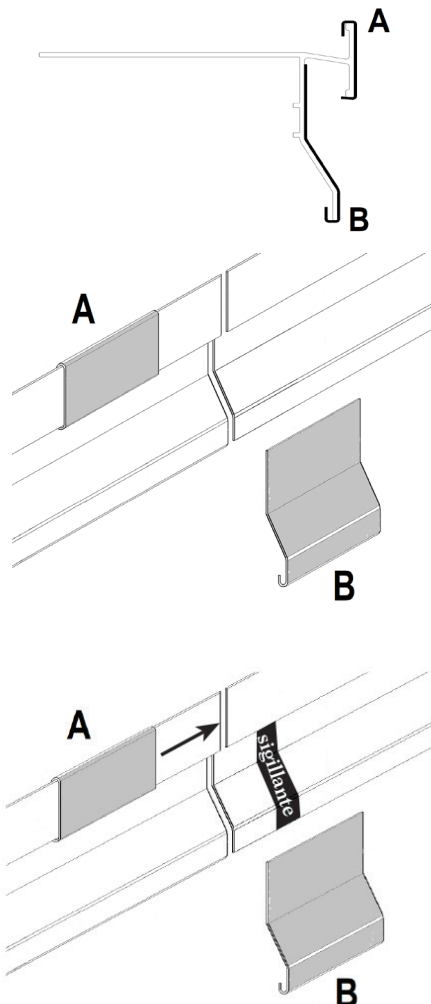
Before fixing the drip edging, check that the edge of the screed is even and, if necessary, correct with products from the Keralevel range.

If the profile has to be cut, file the edges before fixing it, to avoid the risk of cutting and to simplify positioning of the Aquaform DL drip edging connector.

Position Aquaform DC corner for drip edging at the corners of the screed and mechanically fix the corner to the screed with steel nails.

Position the A part of Aquaform DL and mechanically fix Aquaform D Plus to the screed with steel nails

After mechanically fastening the second Aquaform D Plus edging as well in order to obtain a joint of approximately 5 mm between the adjacent edgings, bond Aquaform DL's B piece to cover the joint between the edgings. Use Silicone Color, Neutro Color or Aquastop Nanosil for bonding. Take care to bond only one side of the B piece (as shown in the figure) on one edging only, so that the latter is disengaged from the movements of the second edging.



Instructions for use

→ No Limits Laminate



- ① After the mechanical fixing of the Aquaform D Plus drip edging, apply Nanoflex No Limits on the drilled tab of the drip edging fixed to the screed for a width suitable for bonding Aquastop 120 or Aquastop Plus 120 tape.
- ② Lay the tapes on the fresh waterproofing product following the vertical edge of the drip edging. Press firmly and smooth over to ensure the tapes adhere perfectly, being careful not to wrinkle them.
- ③ When laying the second coat of Nanoflex No Limits carefully cover the tapes. Provide elastic joints at least 5 mm wide to desolidarise the floor from the edge of the Aquaform D Plus drip edging.
In the Laminate Extreme system, follow the procedure outlined above using Aquastop Extreme.

Note: lay the Aquastop 120 or Aquastop Plus 120 tape leaving the drainage holes clear.

→ Laminate No Crack



- After the mechanical fixing of the Aquaform D Plus drip edging, lay the sheets of Aquastop Green creating a joint approximately 5 mm wide between the sheets and the edge of the drip edging.
- ① Apply Aquastop Fix sealant on the drilled tab of Aquaform D Plus and on Aquastop Green for a width suitable for fixing Aquastop 120 or Aquastop Plus 120, taking care to fill in the hollow circular ribs.
 - ② Fix Aquastop 120 or Aquastop Plus 120 on the fresh sealant following the vertical edge of Aquaform D Plus. Press firmly and smooth over to ensure Aquastop 120 or Aquastop Plus 120 seals perfectly, being careful not to wrinkle it.
 - ③ Provide elastic joints at least 5 mm wide to desolidarise the floor from the edge of the Aquaform D plus.
In the Laminate Vapor Pro system, follow the procedure outlined above connecting with Aquastop Fabric.

Note: lay the Aquastop 120 or Aquastop Plus 120 tape leaving the drainage holes clear.

Technical Data compliant with Kerakoll Quality Standard	
Material	Aluminium
Colour	ash grey RAL 7038
	vintage grey
Thickness of paint layer	60 µm
Type of paint layer	polyester powder paint
Bar length	2.7 m
Tile cover trim height	12.5 mm
Anchoring tab width	80 mm
Total height	67.5 mm
Aquaform DC drip edging external corner	120x120 mm
Aquaform DC drip edging internal corner	180x180 mm
Aquaform DL edging trim connecting piece	70x67.5 mm

Colour chart

grey (RAL 7038)

vintage grey

Shades shown are purely indicative.

Warning

- Product for professional use
- abide by any standards and national regulations
- the product is an item according to the definitions of the EC Regulation No. 1907/2006 and therefore does not require a Safety Data Sheet

→ for any other issues, contact Kerakoll Technical Customer Service: + 39 0536.811.516 www.kerakoll.com/contatti



The Rating classifications refer to the GreenBuilding Rating Manual 2012. This information was last updated in December 2024; please note that additions and/or amendments may be made over time by KERAKOLL SpA; for the latest version, see www.kerakoll.com. KERAKOLL SpA shall therefore be liable for the validity, accuracy and updating of information provided only when taken directly from its institutional website. The technical data sheet given here is based on our technical and practical knowledge. As it is not possible for us to directly check the conditions of your building site and the execution of the work, this information represents general indications that do not bind Kerakoll in any way. Therefore, it is advisable to perform a preliminary test to verify the suitability of the product for your purposes.